

WINCHESTER REGIONAL AIRPORT

CURRENT CONDITIONS

The Winchester Regional Airport is recognized as an important component of the County's Business Development efforts. Therefore, the Winchester Regional Airport Authority has developed an Airport Support Area for inclusion in the plan. Business and industrial uses should be the primary land uses in the airport support area and will be supported. The airport support area is an area in which further residential rezoning's will be prohibited in order to protect fly-over areas and noise sensitive areas. Conflicts between airports and residential development can be significant in growing communities. Residents of areas in the vicinity of the airport tend to oppose airport activities and the expansion of such activities because of concern for noise and fly-overs. The airport support area was also established to ensure the feasibility of continued airport use and future airport expansion and the implementation of the Comprehensive Plan.

FOCUS FOR THE FUTURE

There is a need to continue to implement the airport support area expectations. Business and industrial uses should be the primary uses in the airport support area; residential rezoning's will be prohibited.

The Capital Improvement Plan will continue to be a key tool that will facilitate the growth and development of the airport. Remaining capital projects include the acquisition of land along Bufflick Road for noise abatement, development of the northern side of the runway, renovation of the 17 year old terminal building and construction of an aircraft wash rack.

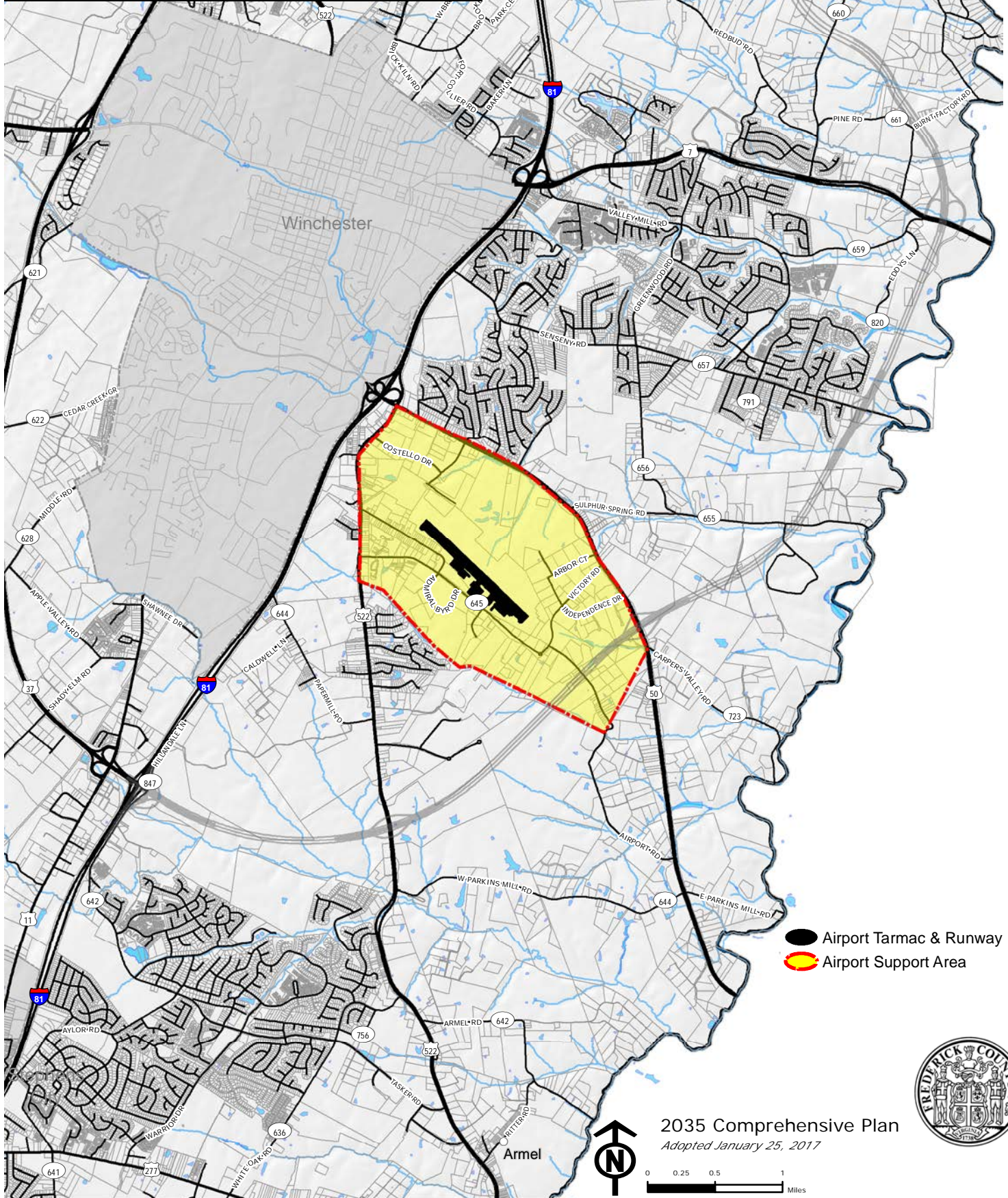
COMMUNITY BENEFITS

Through the support of the member jurisdictions, the Airport will continue to evolve into a modern, first class air transportation facility which will assist business development endeavors in the attraction of new industrial and commercial businesses to the region.

GOALS/STRATEGIES

Specific Goals and Strategies relating to the Winchester Regional Airport are contained in Chapter 4 – Business Development.

Airport Support Area



- Airport Tarmac & Runway
- Airport Support Area

2035 Comprehensive Plan
Adopted January 25, 2017

