

WINCHESTER REGIONAL AIRPORT

CURRENT CONDITIONS

The Winchester Regional Airport is recognized as an important component of the County's Business Development efforts. Therefore, the Plan designates an Airport Support Area for the Winchester Regional Airport. Commercial, and industrial uses should be the primary land uses in the Airport Support Area; these planned land uses are further outlined in Appendix I.

The Airport Support Area is an area in which further residential rezonings will be prohibited. Conflicts between airports and residential development can be significant in growing communities. Residents of areas in the vicinity of the airport tend to oppose airport operations and the expansion of such operations because of concern for noise increased aircraft activity. The Airport Support Area was also established to ensure the continued operational viability of the airport support future airport expansion and facilitate implementation of the Comprehensive Plan and Airport Master Plan.

FOCUS FOR THE FUTURE

There is a need to continue to implement the Airport Support Area expectations. Commercial and industrial uses should be the primary uses in the airport support area; residential rezoning's will be prohibited.

The Capital Improvement Plan will continue to be a key tool that will facilitate the growth and development of the airport. Key capital projects include the acquisition property and easements necessary to protect the approach and departure surfaces of the runway and future growth, relocation of the primary parallel taxiway, replacement of the main aircraft parking apron, development of the north side of the runway, and replacement of the terminal building.

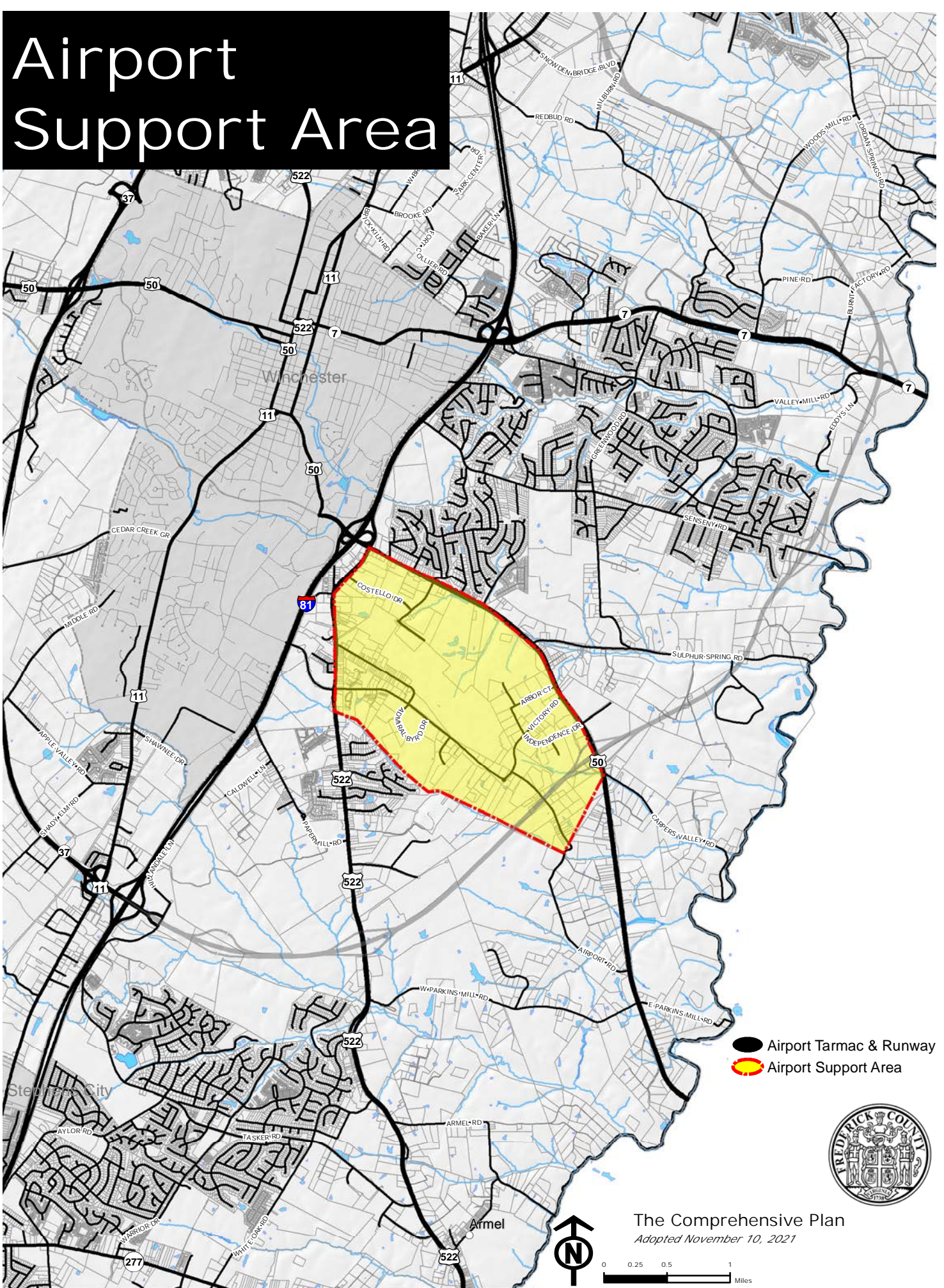
COMMUNITY BENEFITS

Through the support of the Winchester Regional Airport Authority's member jurisdictions, the Airport will continue to be a modern, first-class air transportation facility that accommodates a multitude of aeronautical functions that serve the public good, supports local employers, and attracts new businesses to the region.

GOALS/STRATEGIES

Specific Goals and Strategies relating to the Winchester Regional Airport are contained in Chapter 4 – Business Development.

Airport Support Area



- Airport Tarmac & Runway
- Airport Support Area



The Comprehensive Plan
Adopted November 10, 2021



0 0.25 0.5 1
Miles